

Data sheet boiler series HK

with **USR** respectively **HUSR** combustion chamber

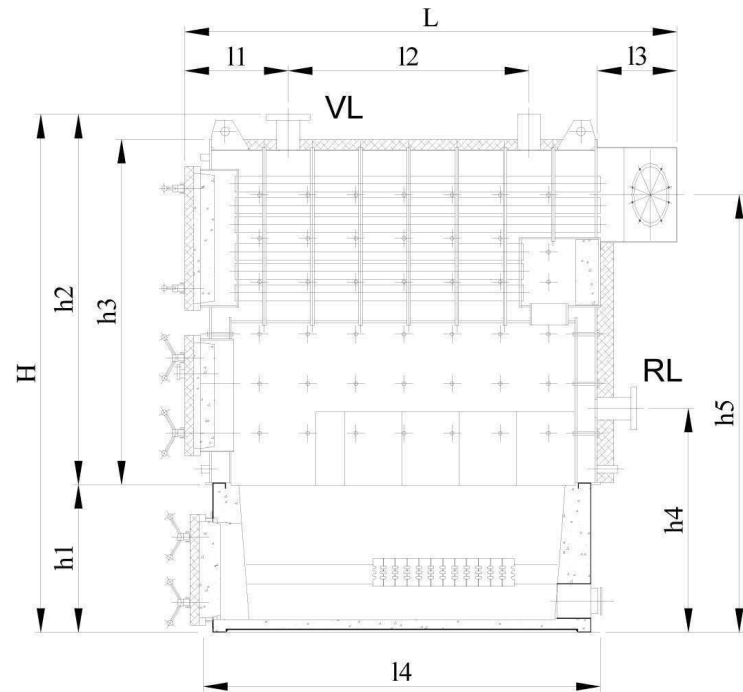


Komm. Rat Ing. Ernst Kurri, Maschinen- Stahl- und Kesselbau,
DVR Nr.:0157961

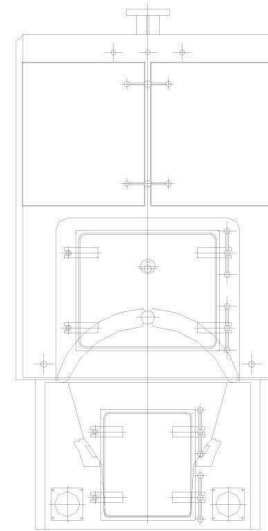
A-2700 Wr. Neustadt, Fliegergasse 70, Tel.: 02622/23865-0, Fax: 02622/23865-3

URL: www.kurri.com e-mail: office@kurri.com

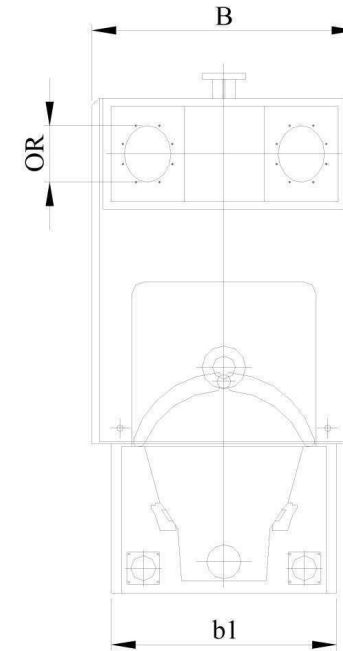
Boiler HK with boiler base USSR dimensions and technical data



Lateral view



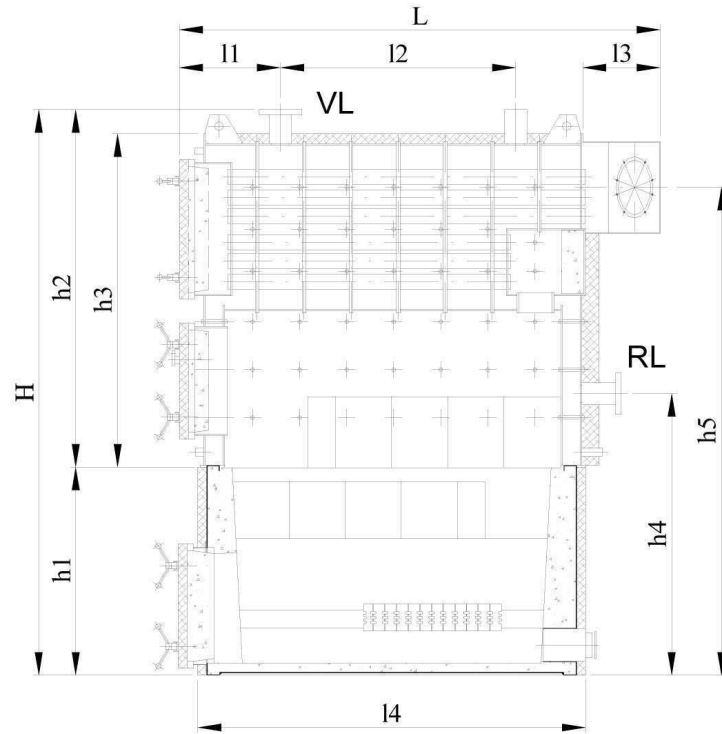
Front



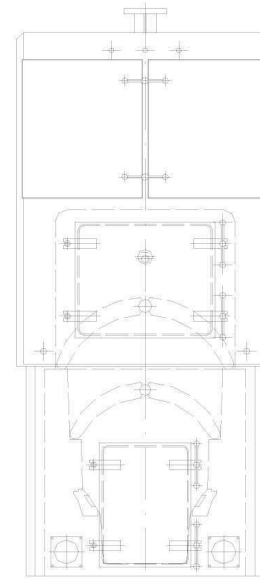
Back

Boiler type	Out-put (kW)	Weight (kg)		Heated area m ²	Water contents (Litres)	VL,RL flange	Security nozzle	Dimensions (mm)													
		Boiler	Base					H	h1	h2	h3	h4	h5	L	l1	l2	l3	l4	R	B	B1
HK 100	100	970	830	7,6	550	DN 65	R 2"	1954	564	1390	1295	834	1600	1650	418	630	285	1280	150	900	840
HK 150	150	1140	950	9,9	700	DN 65	R 2"	1954	564	1390	1295	834	1600	1890	438	860	285	1530	150	900	840
HK 200	200	1810	980	16,0	870	DN 65	R 2"	2200	564	1635	1525	890	1860	1880	395	840	350	1400	200	1150	980
HK 250	250	2040	1170	18,9	1070	DN 65	R 2"	2200	564	1635	1525	890	1860	2130	435	1050	350	1650	200	1150	980
HK 300	300	2160	1310	20,2	1250	DN 80	R 2,5"	2340	580	1760	1650	938	1986	2130	435	1050	350	1660	200	1330	1200
HK 400	400	2640	1840	26,2	1780	DN 80	R 2,5"	2340	580	1760	1650	938	1986	2630	435	1560	350	2180	250	1330	1200
HK 500	500	3410	2450	35,1	2500	DN 100	R 3"	2510	650	1860	1760	1011	2115	3010	460	1824	395	2506	300	1580	1450
HK 600	600	3960	2840	42,2	2850	DN 100	R 3"	2510	650	1860	1760	1011	2115	3520	460	2343	395	3006	300	1580	1450
HK 800	800	5400	4940	62,4	3800	DN 125	R 3"	2670	750	1920	1820	1133	2254	3930	450	2717	445	3375	350	1850	1770
HK 1000	1000	6170	5660	72,6	4420	DN 125	R 3"	2670	750	1920	1820	1133	2254	4555	450	3344	445	4000	350	1850	1770
HK 1250	1250	7060	6380	87,9	4630	DN 150	R 3"	2670	750	1920	1820	1133	2204	4610	450	3344	500	4000	450	2080	2000
HK 1500	1500	7700	7280	103,1	4700	DN 150	R 3"	2820	900	1920	1820	1283	2354	4690	525	3344	500	4000	450	2080	2000
HK 2000	2000	11770	10850	138,3	5080	DN 200	R 5"	3570	1200	2370	2280	1580	3135	4920	520	3500	600	4200	550	2600	2500
HK 2500	2500	13480	11550	168,6	5400	DN 200	R 5"	3570	1200	2370	2280	1580	3135	5200	520	3770	600	4270	550	2600	2500

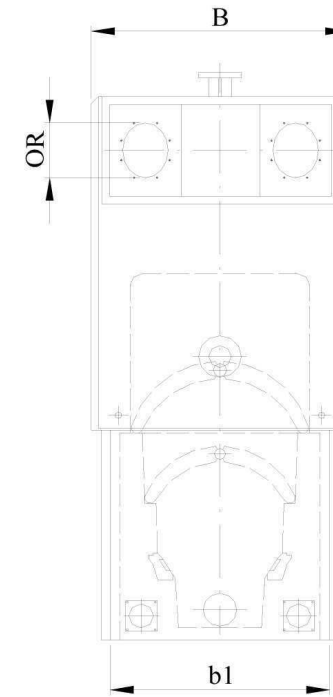
Boiler HK with boiler base HUSR dimensions and technical data



Lateral view



Front



Back

Boiler type	Out-put (kW)	Weight (kg)		Heated area m ²	Water contents (Litres)	VL,RL flange	Security nozzle	Dimensions (mm)													
		Boiler	Base					H	h1	h2	h3	h4	h5	L	I1	I2	I3	I4	R	B	B1
HK 100	100	970	830	7,6	550	DN 65	R 2"	2204	814	1390	1295	1084	1850	1650	418	630	285	1280	150	900	840
HK 150	150	1140	950	9,9	700	DN 65	R 2"	2204	814	1390	1295	1084	1850	1890	438	860	285	1530	150	900	840
HK 200	200	1810	1590	16,0	870	DN 65	R 2"	2585	950	1635	1525	1287	2240	1880	395	840	350	1530	200	1150	980
HK 250	250	2040	1840	18,9	1070	DN 65	R 2"	2585	950	1635	1525	1287	2240	2130	435	1050	350	1780	200	1150	980
HK 300	300	2160	2240	20,2	1250	DN 80	R 2,5"	2760	1000	1760	1650	1358	2406	2130	435	1050	350	1790	200	1330	1200
HK 400	400	2640	2870	26,2	1780	DN 80	R 2,5"	2760	1000	1760	1650	1358	2406	2630	435	1560	350	2310	250	1330	1200
HK 500	500	3410	4030	35,1	2500	DN 100	R 3"	2940	1080	1860	1760	1441	2545	3010	460	1824	395	2640	300	1580	1450
HK 600	600	3960	4850	42,2	2850	DN 100	R 3"	2940	1080	1860	1760	1441	2545	3520	460	2343	395	3140	300	1580	1450
HK 800	800	5400	7170	62,4	3800	DN 125	R 3"	3170	1250	1920	1820	1633	2754	3930	450	2717	445	3510	350	1850	1770
HK 1000	1000	6170	8350	72,6	4420	DN 125	R 3"	3170	1250	1920	1820	1633	2754	4555	450	3344	445	4130	350	1850	1770
HK 1250	1250	7060	9700	87,9	4630	DN 150	R 3"	3170	1250	1920	1820	1633	2704	4610	450	3344	500	4130	450	2080	2000
HK 1500	1500	7700	10950	103,1	4700	DN 150	R 3"	3420	1500	1920	1820	1633	2704	4690	525	3344	500	4130	400	2080	2000
HK 2000	2000	11770	16540	138,3	5080	DN 200	R 5"	4170	1800	2970	2880	2180	3735	4920	520	3500	600	4200	550	2600	2550
HK 2500	2500	13480	18800	168,6	5400	DN 200	R 5"	4170	1800	2970	2880	2180	3735	5200	520	3770	600	4270	550	2600	2550

Technical description of the boiler series HK:

The HK series are constructed as welded steel boilers made from 8 (6) mm thick steel sheets (material St 360R.). Smoke tubes with a wall thickness of 5 mm are used as flue gas pipes. The cover sheets are drilled accordingly and the flue gas pipes are welded into these with a root seam and a cover seam.

The internal turning chambers are insulated with Chamotte- and mineral wool on the surface. The surfaces on the outside are insulated with mineral wool (up to 100 mm thick) resulting in very low heat radiation loss.

The flame pipe has an opening on the bottom and is thus ideal for ignition with a stoker. The combustion chamber (constructed from Chamotte) in the boiler base has ample room for a clean combustion process and little strain. The accumulation of drifting ash is reduced by the high flue gas speeds in the flue gas pipes (2. and 3. strain) resulting in a high grade of efficiency.

Using the respective cleaning doors on the flame pipe and the cold end section the cleaning and inspection processes are easy and take little time. The flame pipe door is outfitted with a control hole, that allows optical inspection of the combustion process.

General technical data:

Performance out-put:	100 - 1500 kW
Max. operational pressure:	4 bar
Test pressure:	6 bar
Max. operational temperature:	100 °C
Min. return flow temperature:	60 °C

Dimensions and weights: check tables on pages 2 and 3

**Komm. Rat Ing. Ernst Kurri, Maschinen- Stahl- und Kesselbau,
DVR Nr.:0157961**

A-2700 Wr. Neustadt, Fliegergasse 70, Tel.: 02622/23865-0, Fax: 02622/23865-3

URL: www.kurri.com e-mail: office@kurri.com